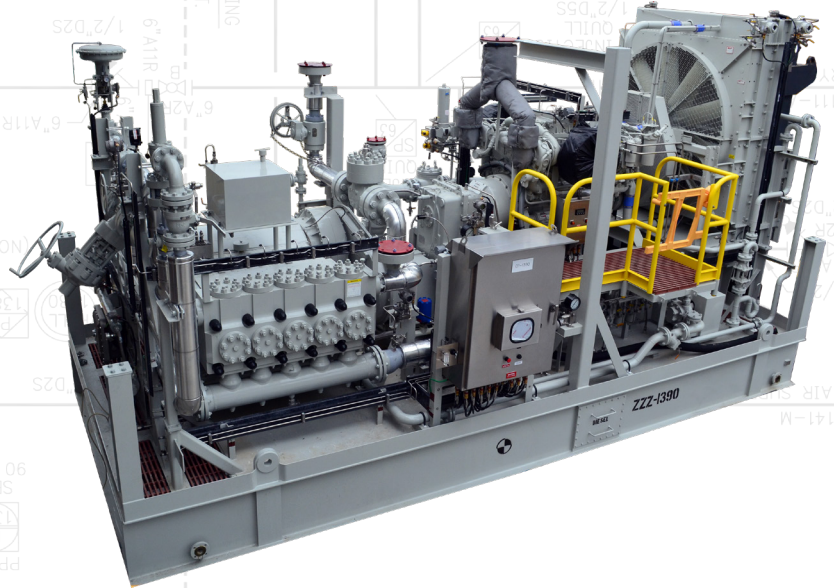




AGI Packaged Pump Systems

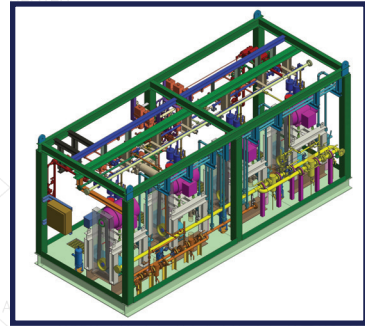
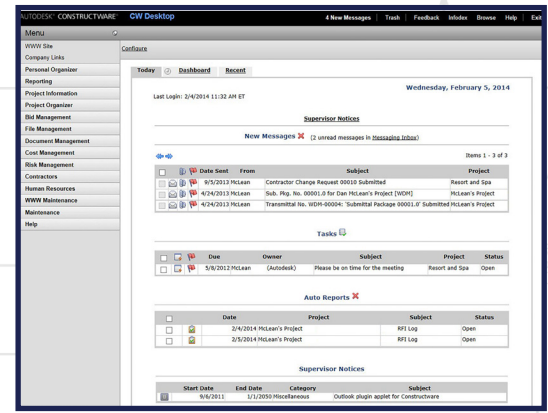
A Subsidiary of AGI Industries



AGI Packaged Pump Systems designs, engineers and fabricates systems that use pumps and compressors as part of a system or process for companies around the world.

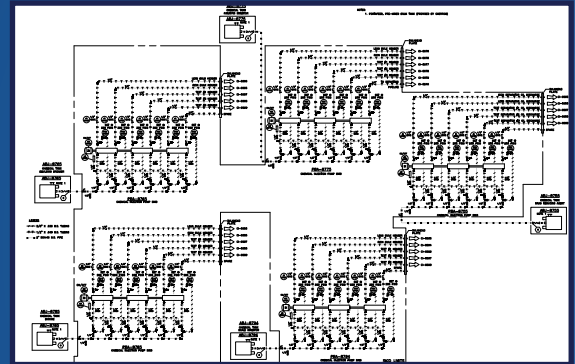
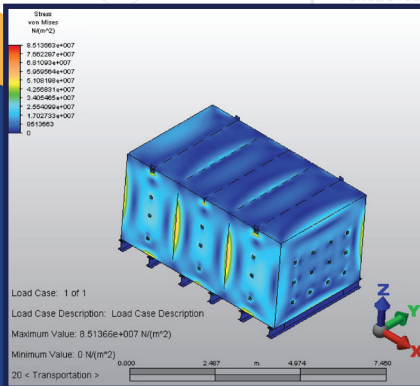
ESTIMATING & PROJECT MANAGEMENT

- 100+ years of combined experience
- Capable of estimating and managing any package project
- Web-based project management program provides communication and visibility throughout the project



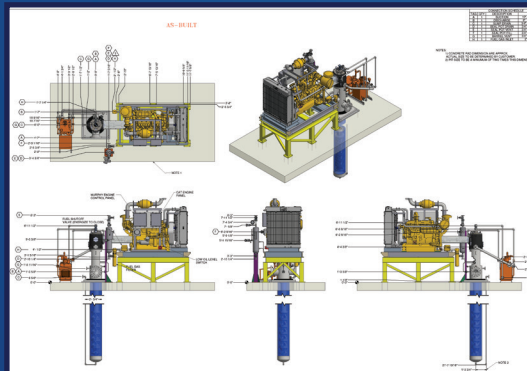
ENGINEERING & DESIGN

- In-house professional engineering
- Custom engineered package solutions
- High pressure systems (15,000 psig and development for 20,000 psig.)
- Autodesk Mechanical Simulation Finite Element Analysis (FEA), RISA Technologies Structural Engineering Software, Flow of Fluids Software
- Auto Desk Inventor 3D modeling fabrication drawings
- Client access for in progress review of design models



DRAFTING

- GA Drawings
- Full Construction Drawings
- 3D Model
- P&ID



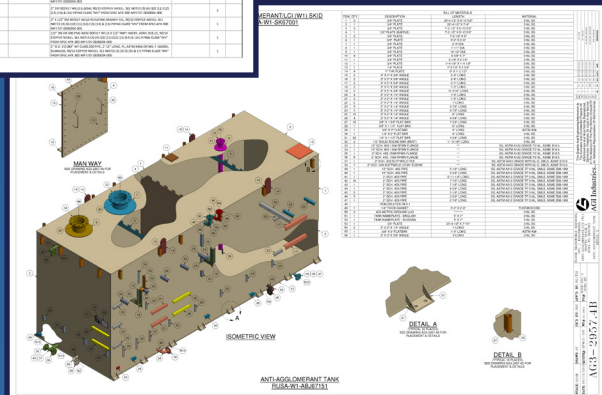
DOCUMENT CONTROL

- Retrieval, retention, & distribution of all documents, drawings, correspondence, reports, submittals, RFIs, data books, etc.
- Utilization of various client SharePoint portals for document exchange to receive, expedite, log, file, track, and distribute documentation



Item No.	Description	Quantity	Unit	Status
447
448
449
450
451
452
453
454
455
456
457
458
459
460
461
462
463
464
465
466
467
468
469
470
471
472
473
474
475
476
477
478
479
480
481
482
483
484
485
486
487
488
489
490
491
492
493
494
495
496
497
498
499
500

Item No.	Description	Quantity	Unit	Status
447
448
449
450
451
452
453
454
455
456
457
458
459
460
461
462
463
464
465
466
467
468
469
470
471
472
473
474
475
476
477
478
479
480
481
482
483
484
485
486
487
488
489
490
491
492
493
494
495
496
497
498
499
500



PROCUREMENT

- Bill of Materials
 - Simplified Equipment BOM
 - Separate Fabrication and Equipment BOMs
- Procurement Department
 - Issues, Expedites, & Executes

FABRICATION & TESTING

Welding, Assembly, & Testing

- Industry Standards (AWS D1.1, ASME B31.3, API, ANSI, ABS, etc.)
- FCAW, GMAW, GTAW, SMAW
- In-house welding: 316SS, Super Duplex, Aluminum, 4130
- Hydrostatic Testing
- Flushing & Cleaning Capabilities
- Factory Acceptance Testing (FAT) / String Testing



PACKAGES

FACILITY & EQUIPMENT

Our Facility

- 150,000 sq. ft. Outdoor Fabrication
- 20,000 sq. ft. Indoor Fabrication Facility
- 5,000 sq. ft. Enclosed Assembly/Testing Facility
- 2,500 sq. ft. Indoor Warehouse

Our Equipment

- Overhead Indoor Cranes
- Forklifts
- Cherry Pickers
- 150,000 lb. Gantry Crane
- Shielded Metal Arc Welding (SMAW)
- Gas Welding Arc Welding (GMAW)
- Flux Core Arc Welding (FCAW)
- Plasma Arc Welding (PAW)
- Gas Tungsten Arc Welding (GTAW)

- Chemical Injection
- Multistage Pipeline Pump Packages
- Salt Water Disposal Packages
- Well Equalization
- Pipeline Pigging
- Potable Water
- VRU Compression Skids
- Heat Medium
- Fluid Transfer
- Process Packages
- Lube Oil Skids



SERVICES

- Installation
- Commissioning & Startup
- REAcT
- Repairs & Maintenance

AGI Industries
Pumps, Packaged Systems, Measurement & Control

REAcT - AGI Rotating Equipment Action Team

AGI Rotating Equipment Action Team - As a "Solution First" Equipment and Service Provider AGI Industries has assembled some of the best, brightest and most experienced in the industry to diagnose and fix pump and system problems. Using both internal competency and that of our manufacturing partners and selected subcontractors we are able to diagnose and make recommendations on pumps, seals, piping, control, or almost any problem related to fluid handling or movement.

How Do We Do It?

- ▶ Flow, Pressure, Temperature, Vibration, and Hydraulic Transient Event Monitoring / Recording
- ▶ System Analysis
- ▶ NPSH Calculations
- ▶ Field Performance Testing
- ▶ Motor Circuit Testing
- ▶ Mechanical Seal Failure Analysis
- ▶ Peer Review of Computer Surge Analysis & Modeling



AGI Packaged Pump Systems

An Employee Owned Company

2110 SW Evangeline Thruway • Lafayette • LA • 70508

(337) 769-7297 Phone • (337) 233-9746 Fax

www.agipackagedpumpsystems.com

